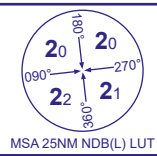


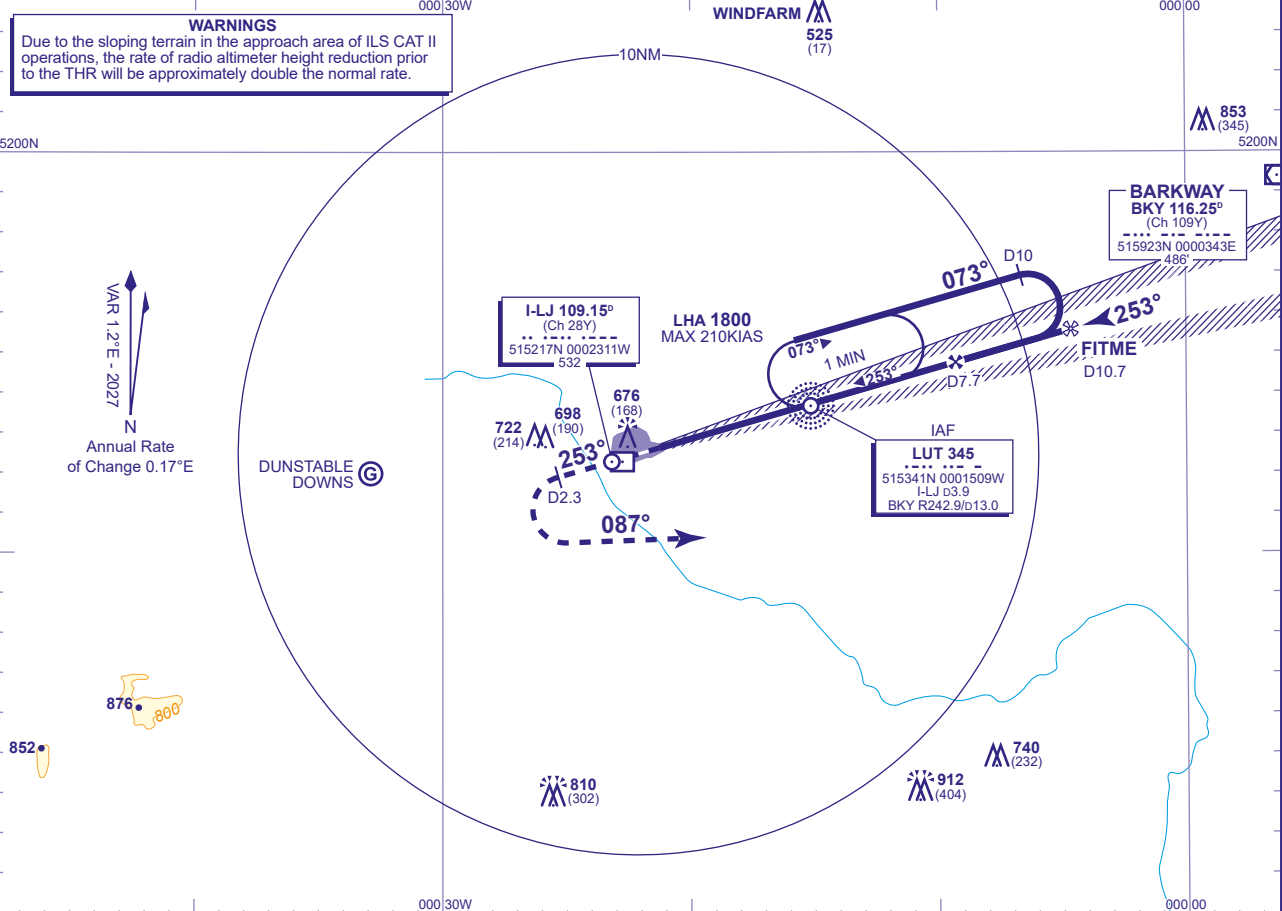
INSTRUMENT APPROACH CHART - ICAO

LONDON LUTON
ILS/DME/NDB(L)
RWY 25
(ACFT CAT A,B,C,D)



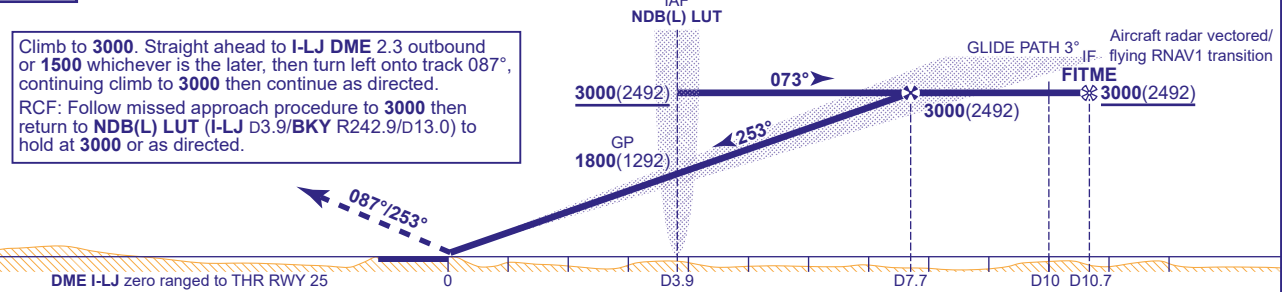
APP	129.550	LUTON RADAR	AD ELEVATION	527
TWR	132.555, 126.730	LUTON TOWER	THR ELEVATION	508
	121.755	LUTON GROUND	OBSTACLE ELEVATION	912 AMSL (404) (ABOVE THR)
RAD	128.750	LUTON DIRECTOR		
ATIS	120.580	ARRIVAL INFORMATION	BEARINGS ARE MAGNETIC	

TRANSITION ALTITUDE
6000



RECOMMENDED PROFILE GLIDE PATH 3°, 320FT/NM							
DME I-LJ	7	6	5	4	3	2	1
ALT(HGT)	2780(2272)	2460(1952)	2150(1642)	1830(1322)	1510(1002)	1200(692)	890(382)

RDH 55 Shuttle in hold if necessary.



Aircraft Category	A	B	C	D	Rate of descent	G/S KT	160	140	120	100	80
OCA (OCH)	CAT I	654(146)	664(156)	677(169)	691(183)	FT/MIN	840	740	630	530	420
	CAT II	565(57)	572(64)	587(79)	602(94)						
VM(C)OCA (OCH AAL)	Total Area	1100(573)	1100(573)	1300(773)	1300(773)						

NOTE 1 Aircraft can normally expect to be radar vectored onto final approach.
2 Aircraft unable to receive DME inform ATC.
3 Aircraft will normally be required to hold not lower than 3000.